



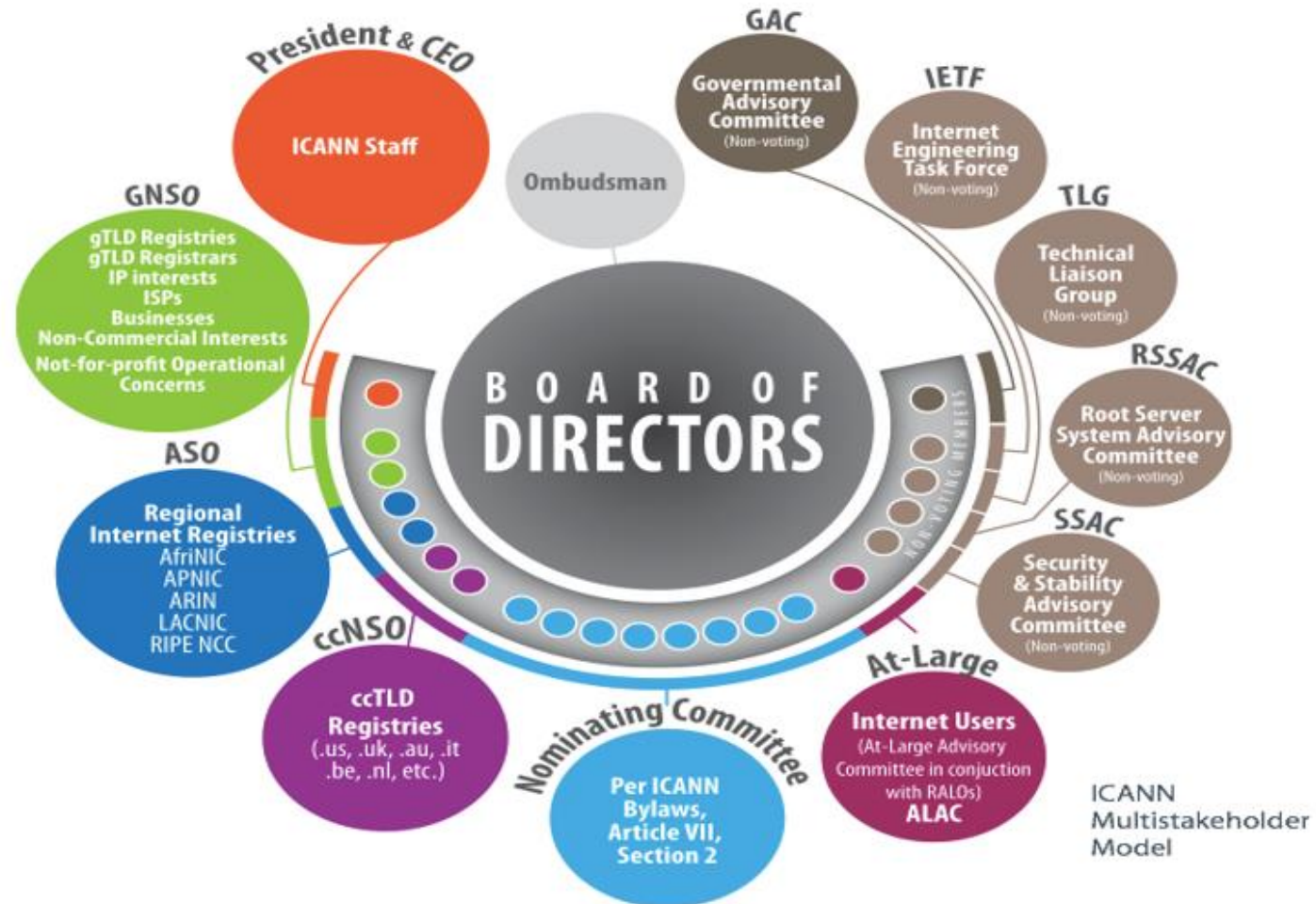
the possible **tracks** for the enhancing the RIPE-EURALO collaboration

RIPE86

Sebastien Bachollet, Chair of EURALO, (At-Large, ICANN)
Natalia Filina, Secretary of EURALO, (At-Large, ICANN)



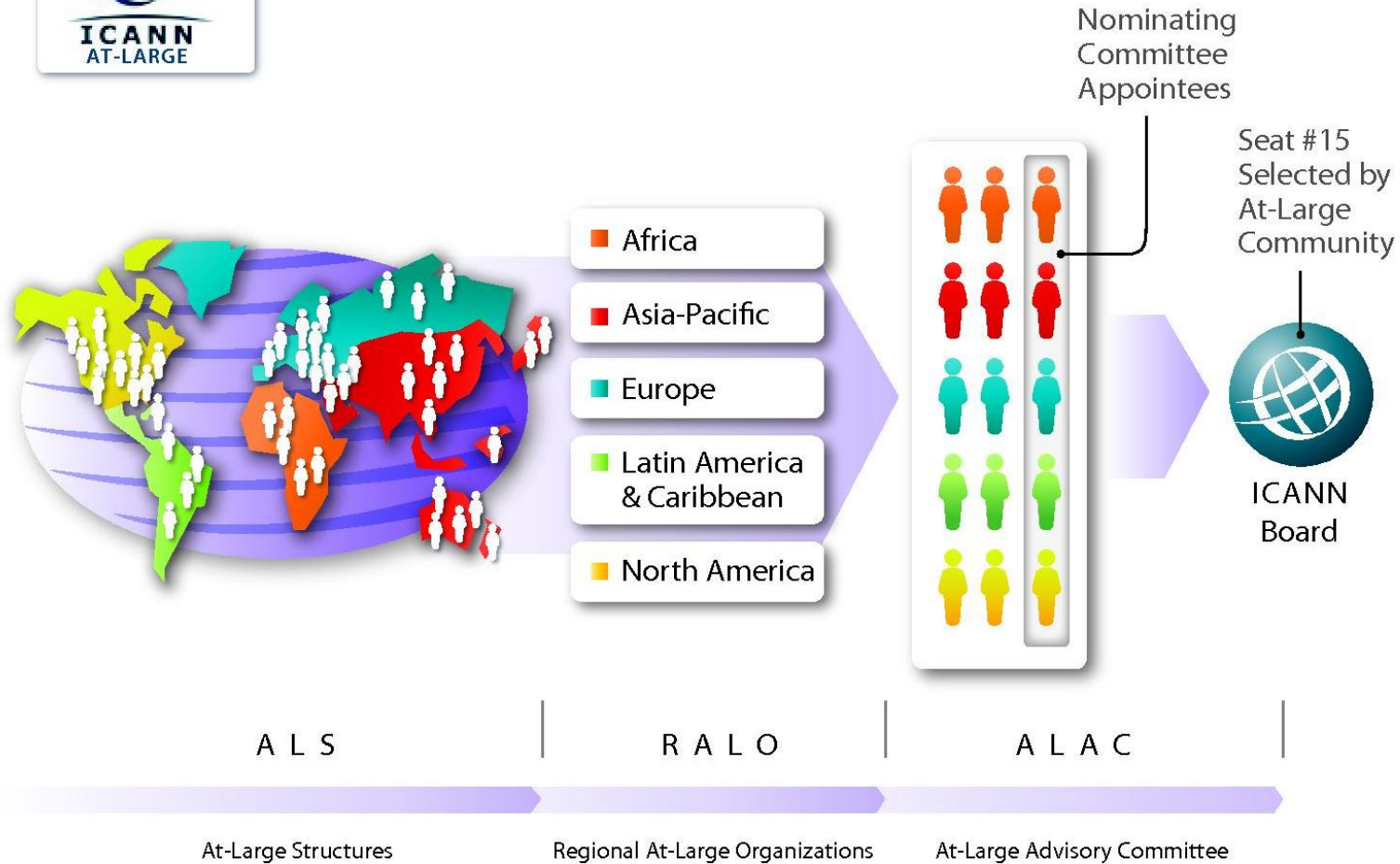
MULTISTAKEHOLDER MODEL: IN ICANN COMMUNITY & ICANN BOARD



the possible [tracks](#) for the enhancing the RIPE-EURALO collaboration



At-Large Organizational Diagram



Map is for representational purposes only.
 For more detailed information see the Google Map of the RALOs and ALSes at: <http://www.atlarge.icann.org/maps/>
 Full country to region list: <http://www.icann.org/en/meetings/montreal/geo-regions-topic.htm>

the possible tracks for the enhancing the RIPE-EURALO collaboration



the possible **problem** for the enhancing the RIPE-EURALO collaboration:

- misunderstanding of the mission, goals and tasks of the communities
- the ICANN European region is large (more than Europe only): legislation, practice, tasks, end users issues
- a small active core of work participants
- divided space | networks
- geopolitics

the possible [tracks](#) for the enhancing the RIPE-EURALO collaboration

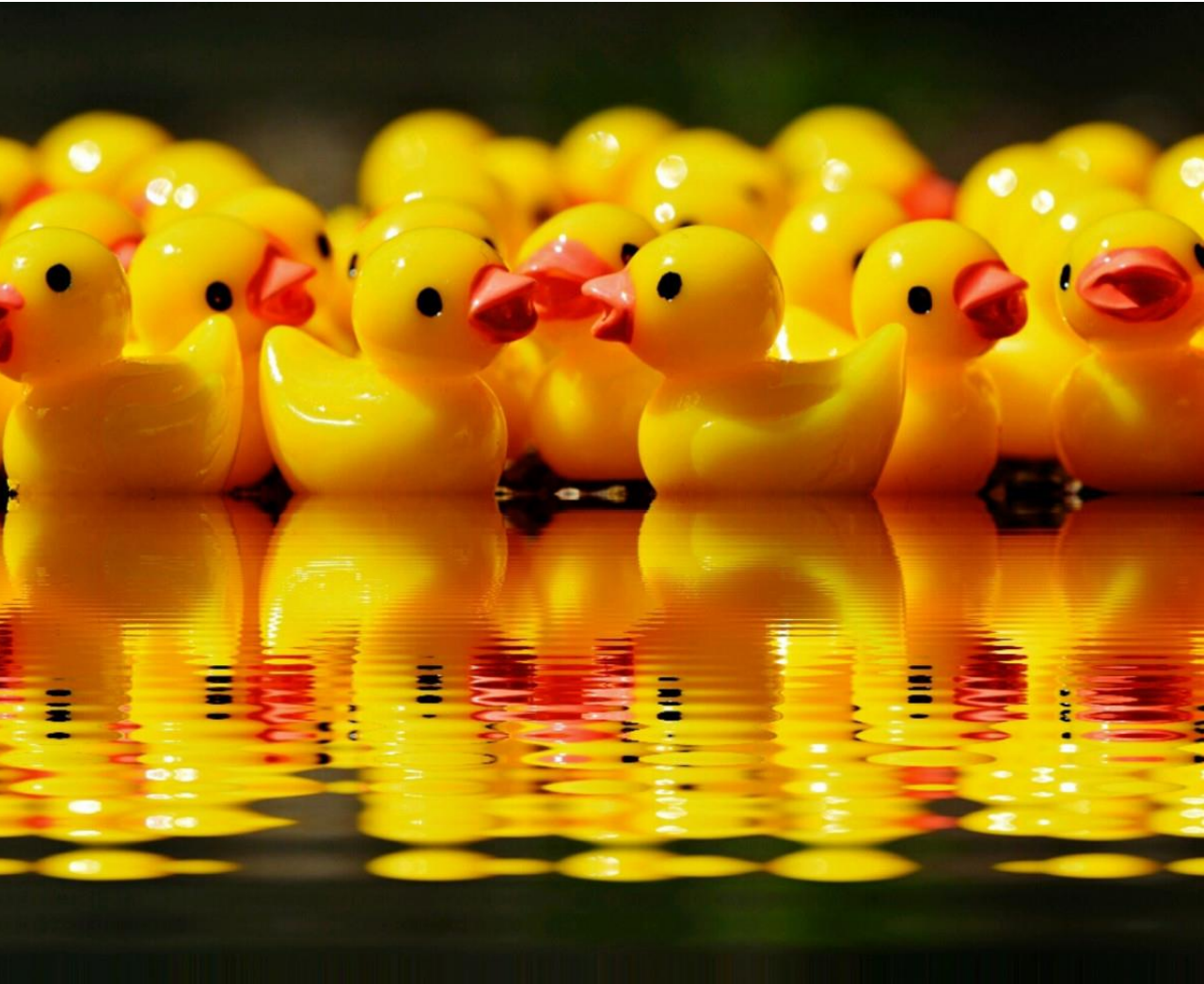


the possible **tracks** for the enhancing the RIPE-EURALO collaboration:

- Capacity Building activities
- End users experience researching
- Sharing news/updates
- Joint events/efforts/WGs

To get result we want

- new contributors for the communities
- addressing and raising up important issues
 - solution of common problems
- distribution of information
 - productive networking



the possible [tracks](#) for the enhancing the RIPE-EURALO collaboration



Thank you
See you!