

# Mapping the Geography of Data in Central Asia: *A View From Within*

**Louis Pétniaud**

Kevin Limonier  
Antonin Rosa-Martin  
Loqman Salamatian

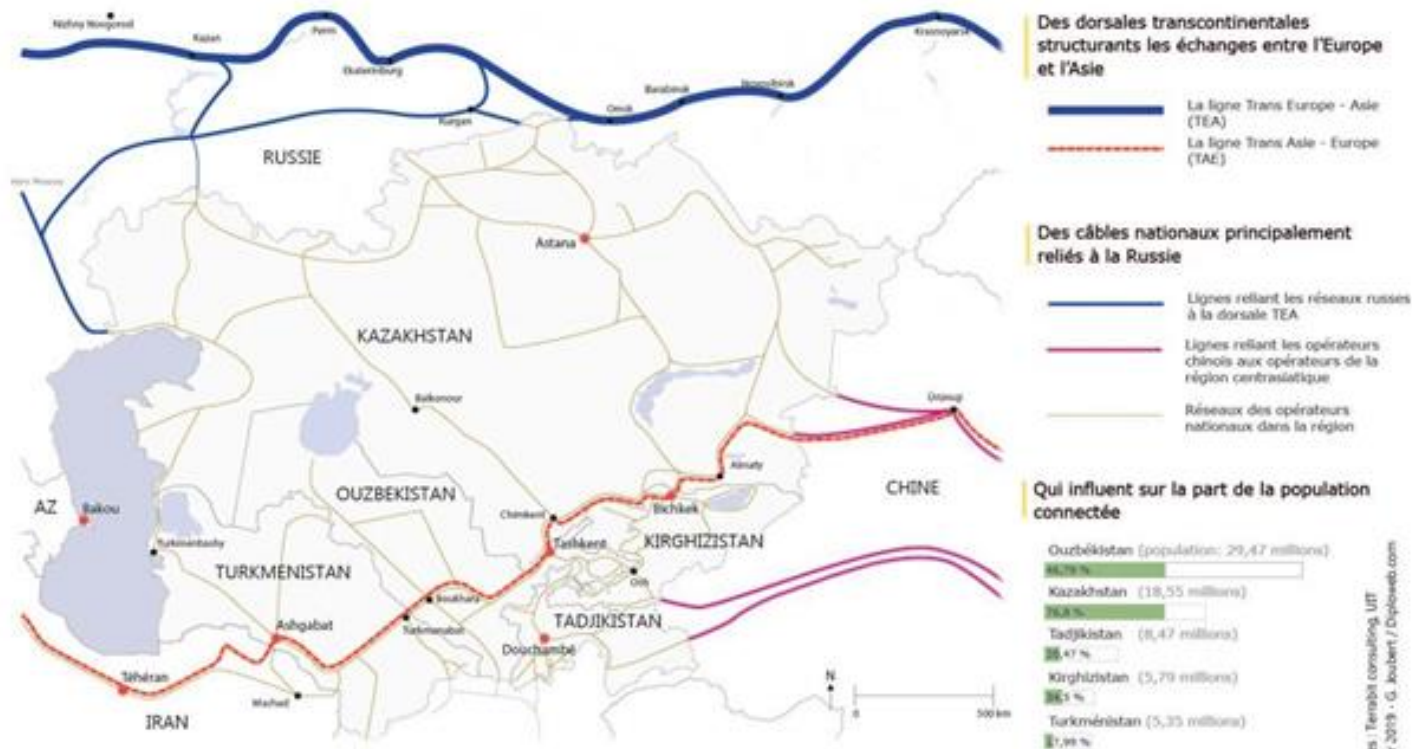


# Mapping the (geography of the) Internet at three different levels

- Research Project carried out by GEODE researchers
- Support from RIPE Project Funding
- **Broad objectives:**
  - Mapping the Internet of Central Asia at 3 different levels
  - Better understand the geopolitics behind the connectivity architecture
  - Methodological question: What gaps can we fill by going on the field?
    - The choice of an “simple” case study: Central Asia/Kyrgyzstan

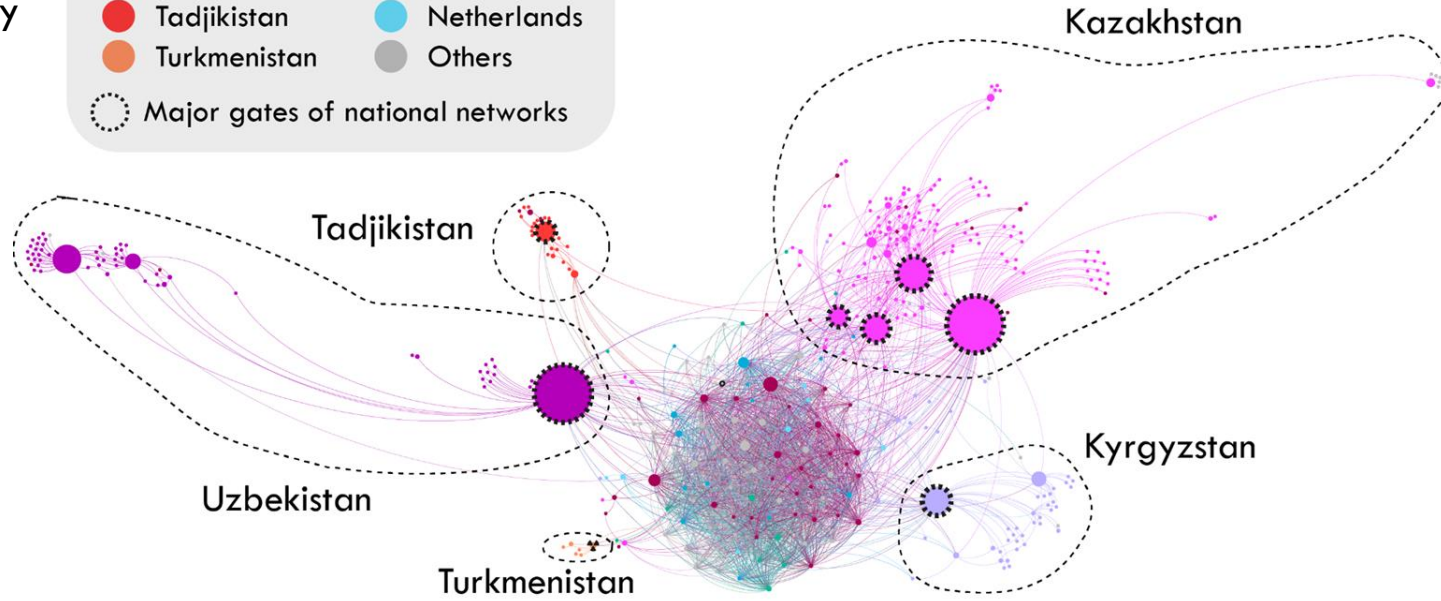
# Mapping physical infrastructures: possible with caveats

## L'espace centrasiatique: un enclavement numérique



# Mapping connectivity with BGP feeds

- Relative centralization of networks
- Very limited intra-regional connectivity





# Mapping data with the Internet geographer's best friend

- Geolocated by design
- Can be leveraged to augment our knowledge of the geography of connectivity



## Mapping latencies between Kyrgyzstan and its neighbours: more or less coherent patterns





# Problem: Kyrgyzstan is a Ripe Atlas Far East





# Fieldwork in Kyrgyzstan

## **Main goals:**

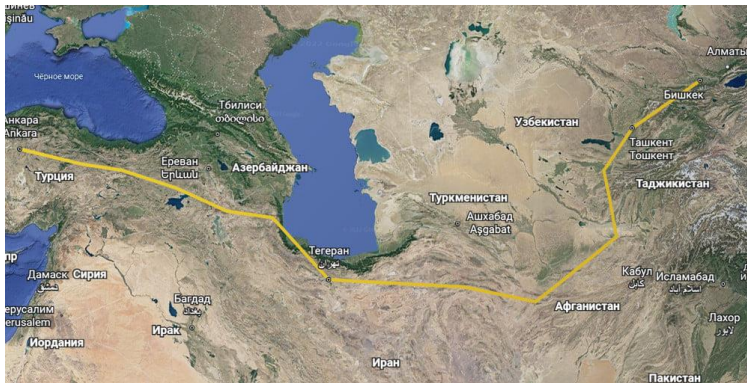
- Understanding connectivity through interviews with local stakeholders (Providers, IXPs, government)
- Create on-site measurements from remote connected places to improve granularity

# Interviewing local stakeholders to understand the architecture of connectivity

- Lack of a shared understanding of the region's connectivity
  - Southern IXPs
  - Connectivity with neighboring countries
  - No regional coordination/cooperation or even contacts

# Interviewing local stakeholders to understand the architecture of connectivity

- A political environment with specific views on the network: “что такое цифровой суверенитет?”
  - Strong dependency on Kazakh and Russian networks
  - Redundancy and efficiency of networks are the responsibility of private operators
- The limited paradigm shift of the Russian invasion of Ukraine: how to escape structural dependencies?
  - Dependency to Russia as an “inescapable” fact
  - Some projects welcome : Turktelecom / Chinese infrastructures?



# Interviewing local stakeholders to understand the architecture of connectivity

- Improving cooperation with RIPE: potential obstacles and overcoming them
  - Lack of interest
  - Lack of competent personnel
  - Overall lack of certainty over the cost/benefit ratio

# Creating “local” measurements

A screenshot of a mobile navigation application interface. On the left, there is a vertical list of stops, each with a circular selection button. The stops listed are: Bishkek, Toktogul, Jalal-Abad, Osh, Jalal-Abad, Karakol, Bishkek, and Asman Yurt Resort, 52FG+QFX, Unnamed. Below this list is a red location pin icon and the text "Bishkek". At the top of the interface, there are icons for different transport modes: a car, a bus, a person walking, a bicycle, and an airplane. To the right of these icons are buttons for "Hotels", "Gas", "Rest stops", and "More".

A satellite map of Kyrgyzstan showing a blue route connecting several cities. The route starts in Bishkek and goes to Tokmogol, Karakol, Toktogul, Karakol, Jalal-Abad, Osh, and finally Asman Yurt. A callout box above the Bishkek stop indicates a travel time of "35 hr" and a distance of "1,955 km". Other cities labeled on the map include Taraz, Tapaa, Tokmok, and Almaty. The word "Kyrgyzstan" is written across the center of the map. In the bottom right corner, there is text in Chinese: "Kizilsu Kyrgyz Autonomous Prefecture" and "克孜勒苏柯尔克孜". The Google logo is visible in the bottom right corner.

A screenshot of a mobile application interface showing a map with several blue house icons representing Wi-Fi hotspots. Below the map, it says "23 Wi-Fi disponible à proximité". Two hotspots are highlighted: "Coffee Kara\_kul" with the address "Unnamed Road, Каракул, Киргизия" and the network name "jumataev", and "Erayin Evi" in Karakol with the network name "Kyrgyztelekom Gulzada". The top of the screen shows the time "12:15", a battery level of "88%", and a signal strength indicator.



# A vizualisation platform fit for Geopolitics : Amethyst

OPEN OPTIONS

RESET

**87.245.233.13**

ASN9002

RETN-AS

**United Kingdom**

RETN Limited

45824 addresses announced

Rank 13

**AS cone: 7928 AS**

91800184 addresses

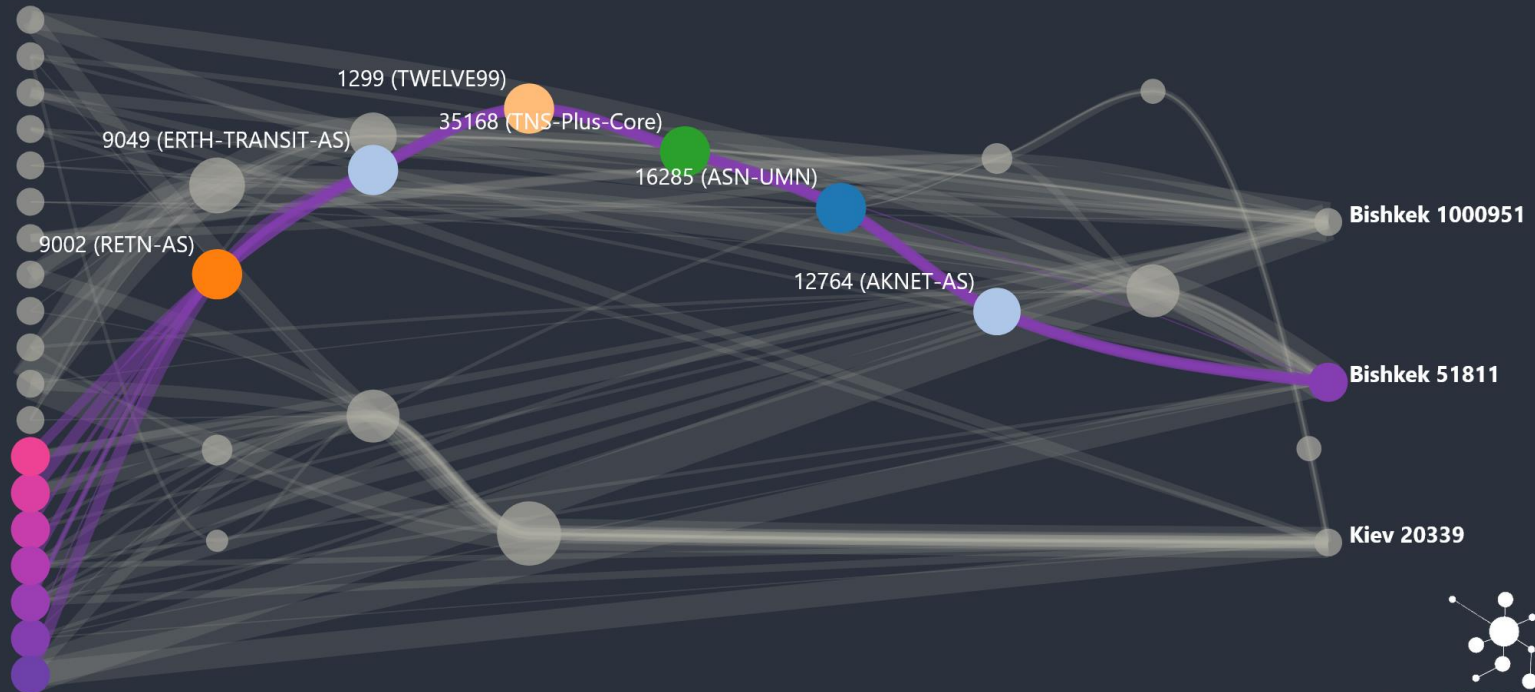
106301 prefixes

**Degree: 68**

In degree: 40

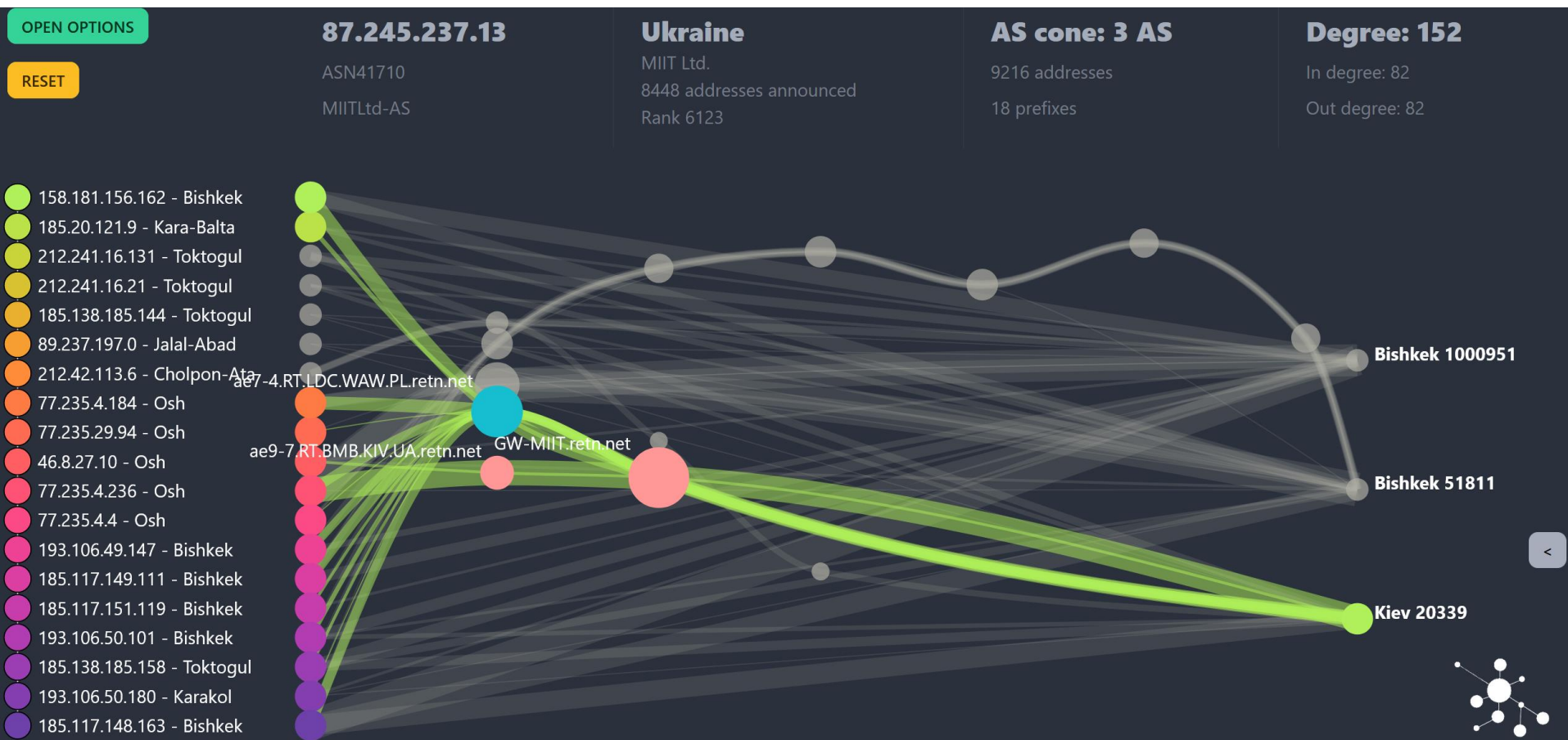
Out degree: 40

- 158.181.156.162 - Bishkek
- 185.20.121.9 - Kara-Balta
- 212.241.16.131 - Toktogul
- 212.241.16.21 - Toktogul
- 185.138.185.144 - Toktogul
- 89.237.197.0 - Jalal-Abad
- 212.42.113.6 - Cholpon-Ata
- 77.235.4.184 - Osh
- 77.235.29.94 - Osh
- 46.8.27.10 - Osh
- 77.235.4.236 - Osh
- 77.235.4.4 - Osh
- 193.106.49.147 - Bishkek
- 185.117.149.111 - Bishkek
- 185.117.151.119 - Bishkek
- 193.106.50.101 - Bishkek
- 185.138.185.158 - Toktogul
- 193.106.50.180 - Karakol
- 185.117.148.163 - Bishkek





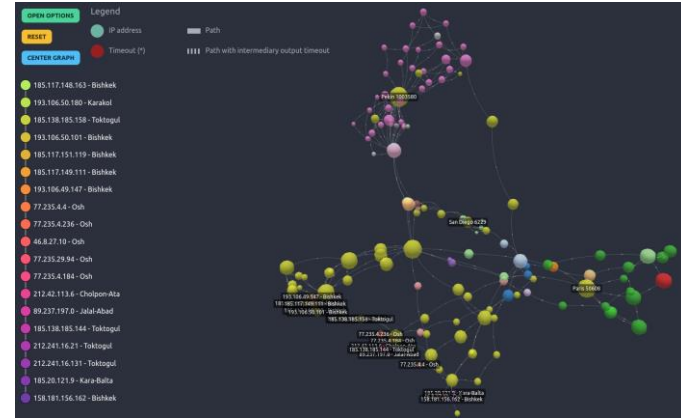
# A vizualisation platform fit for Geopolitics : Amethyst





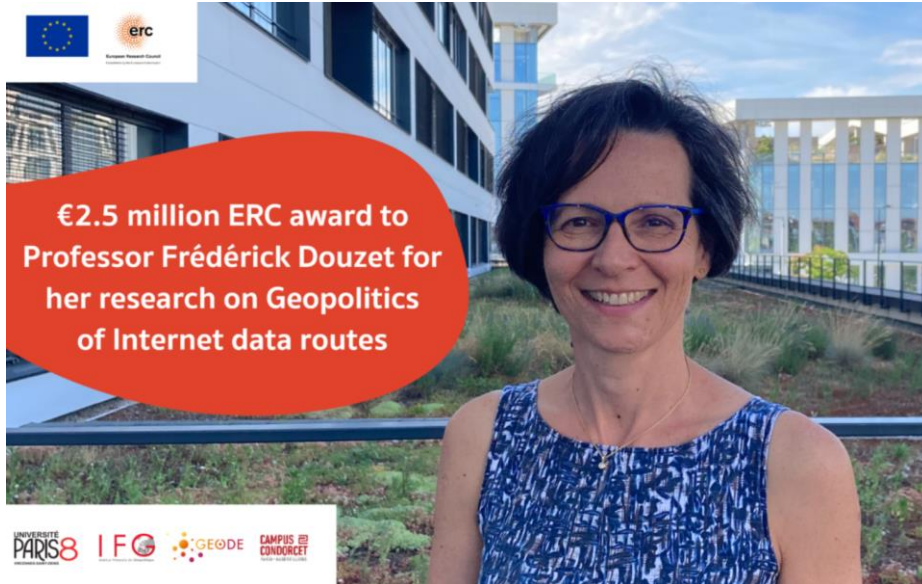
# Potential for improvements and suggestions from WG?

- **Ripe Atlas dissemination:**
- How to increase the spread of RIPE Atlas probes, including in strategic areas
- Are “moving” probes efficient tools for other communities?
- **Facilitate the manipulation of measurements data**
- Work in progress: EasymapIT
- Geolocation data: how to prioritize the most reliable one?
- Develop new ideas for data visualization
- **On the replicability and reliability of fieldwork as a source of data: discussion is open**
- 2nd Fieldwork in Ukraine (February 2023) confirms the relevance for assessing the geopolitical causes and consequences of connectivity + geographical properties of the network



# Future steps

- Other fieldworks: Ukraine, Canada, Pakistan, French Guyana...
- Increase cooperation with researchers from CS, STS, Mathematics
- 5 years project starting now



**Thank you !**

[l.petiniaud@gmail.com](mailto:l.petiniaud@gmail.com)

<https://twitter.com/LPetiniaud>

***RIPE Labs articles***

- 1/ First article for RIPE Labs on *The Geopolitics of Routing* (2019):  
[https://labs.ripe.net/author/louis\\_petiniaud/geopolitics-of-routing/](https://labs.ripe.net/author/louis_petiniaud/geopolitics-of-routing/)
- 2/ The Central Asia fieldwork: [https://labs.ripe.net/author/louis\\_petiniaud/the-human-factor-in-the-geopolitics-of-the-internet/](https://labs.ripe.net/author/louis_petiniaud/the-human-factor-in-the-geopolitics-of-the-internet/)
- 3/ Coming soon: Description and updates of the Amethyst platform
- 4/ The Ukrainian case: someday